

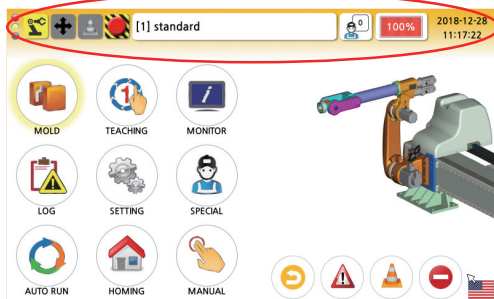
H5-28150

관절형 간편메뉴얼

TP Simple Manual



- ① : TP Main Power ON/OFF Switch
- ② : Automatic / home / Speed Button
- ③ : Start&Stop / Error Reset / Jog Button
- ④ : Emergency Switch
- ⑤ : Jog Movement Button



[Icons] : Software / Robot / Jog / Safety Area / Emergency Switch

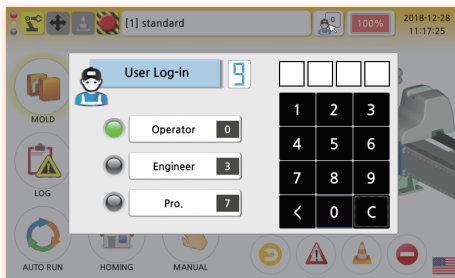
[5] longrun : Currently selected mold name

[User Icon] : User permission

[100%] : Robot main speed

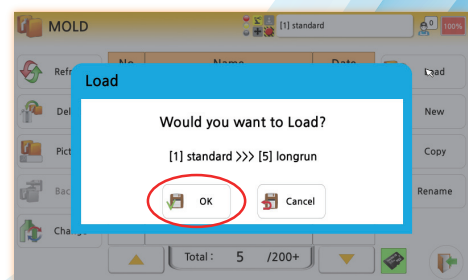
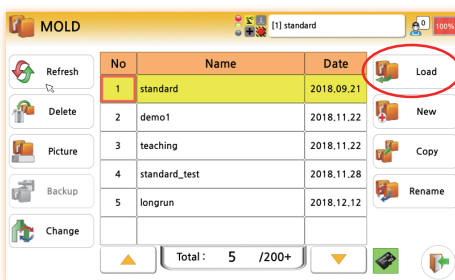
2018-12-28 11:08:24 : Robot setting time

Automatic STEP 1



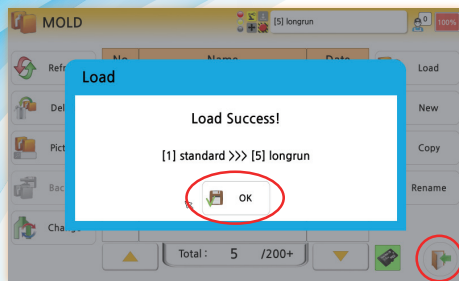
- 1-1. User selection
 - User (0 Level) PW : 0000 <- Log in
- 1-2. Check if the currently selected mold is to be used
(If the mold is to be using, move to STEP 3-3 for automatic operation)
- 1-3. Click on mold icon on Main screen

Automatic STEP 2



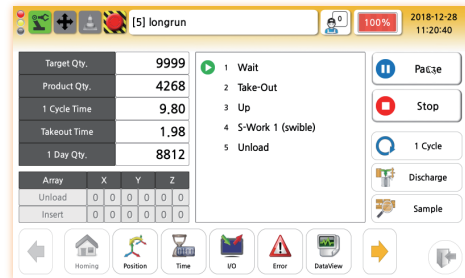
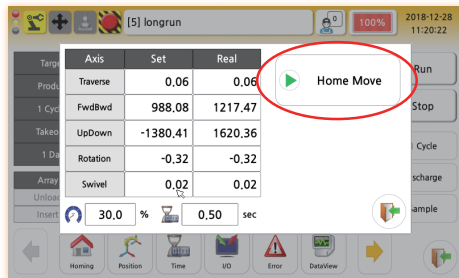
- 2-1. Select the mold to use (When selected, the background screen turns yellow)
- 2-2. Click load in the right menu
- 2-3. Click OK in the load confirmation screen

Automatic STEP 3



- 3-1. Click OK in the load success screen
- 3-2. Click the close button below to go to the main screen
- 3-3. Click the auto-run on the main screen

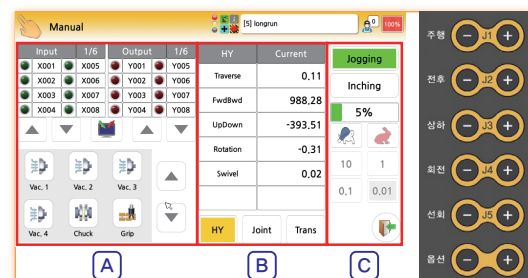
Automatic STEP 4



- 4-1. Click HomeMove to go to Home
- 4-2. Right button activated when completed
- 4-3. Click on the drive button to start automatic
- 4-4. When driving button is clicked, change to pause button
 - Pause : Robot stops immediately
 - Stop : Stop after one cycle

- ※ To exit the automatic page, press the pause or stop button to activate the close button while the robot is stopped
- one cycle : When click the button, stop after one cycle
 - Defective product discharge : Move to the defective product discharge position and open if convergence (weight, temperature, etc.) measurement value is not normal (Caution : For defective product discharge, set the location of it where there is no mechanical interference)
 - Sampling : When it opens, go to the sampling location (Caution : For sampling, set the location of it where there is no mechanical interference)

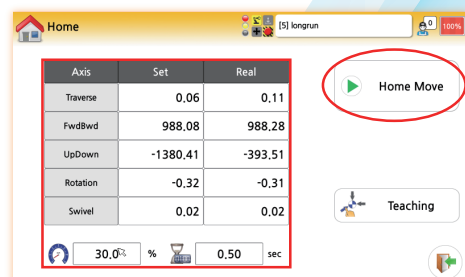
Manual



1. Click Manual button on Main screen
2. Use the right keypad on the manual screen to manually operate the robot

- [A] : Turn I/O on and off manually
- [B] : Current position value screen
Selection jog(HY/Joint/Trans)
- [C] : Jog movement setting screen
Jogging : Movement while pressing the keypad
Inching : Move to selected mm only once(10/1/0.1/0.01)
Speed control : Turtle icon is deceleration, rabbit icon is acceleration

Homing motion



1. Click homing button on main screen
2. Movement to home position if homing motion button is pressed on homing screen

- Set : home position
Real : current position
Location teaching : To go teaching page

Caution ※ When moving home, Inside of mold, crosswise → vertical → left/right&position(rotation method)
※ Outside of mold, vertical → crosswise&left/right&position(rotation method)